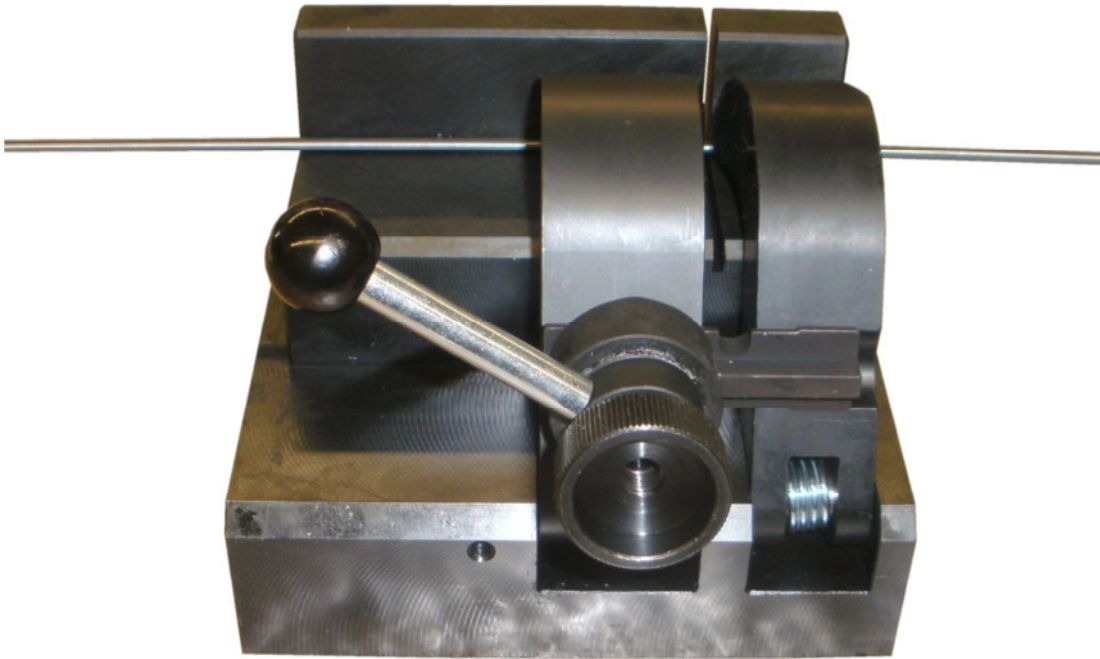


## Technical information 374.78.402.10

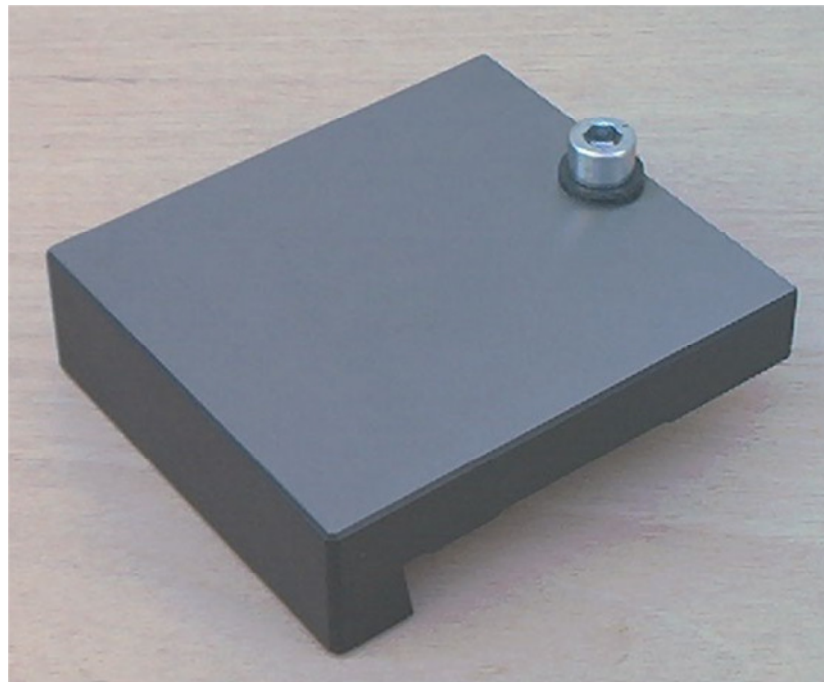
The TM 374 cut-off machine can be used for many different applications thanks to our vast clamping options.

You can also use our clamping options from the UFT 370 machine.  
Below a list of all available clamping systems and other accessories.





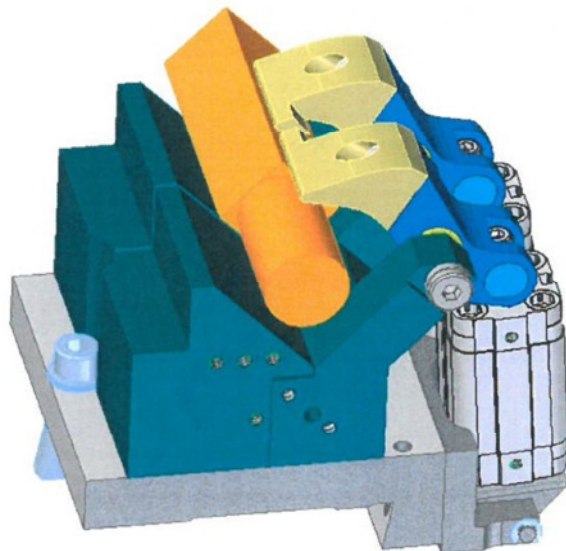
Quick clamping device 370.17.075.00 for a fast clamping of the work pieces, can only be used together with the 3-point clamping devices 370.17.100.00 or 370.17.140.00



Simple base 370.17.120.00 - to build your own clamping system. After machining it must be surface treated.



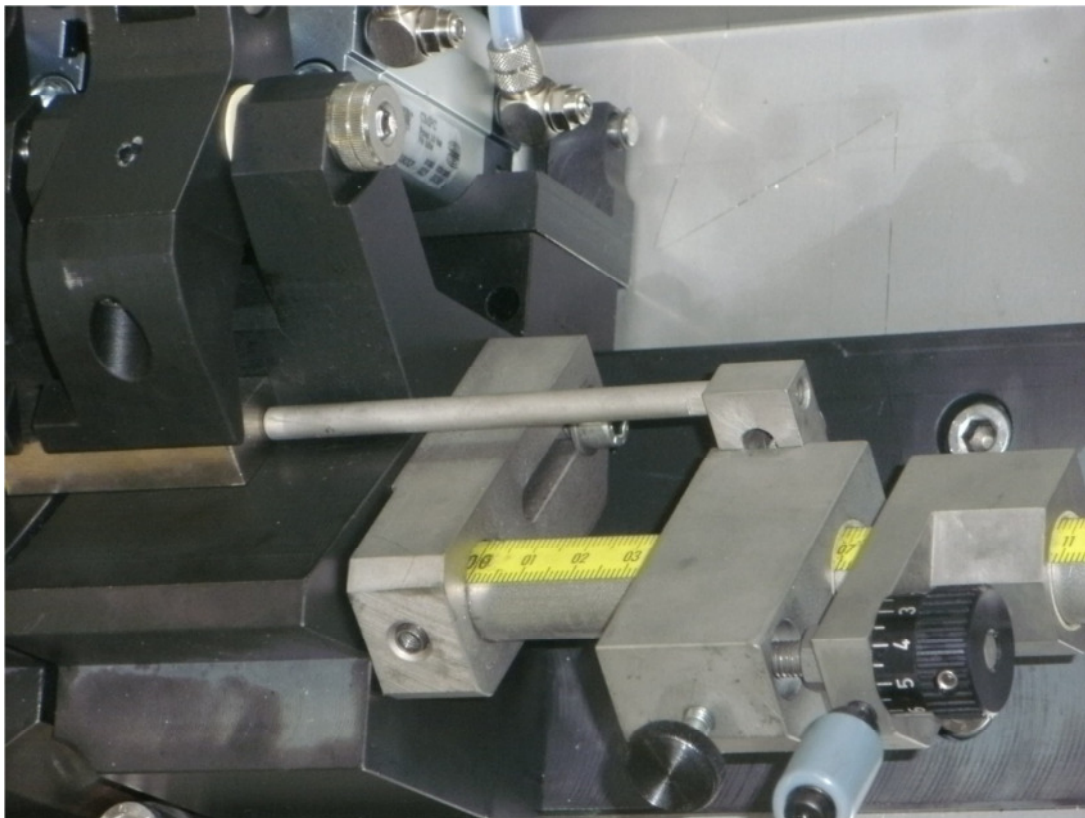
374.17.134.00 Pneumatic clamping device with V-prism



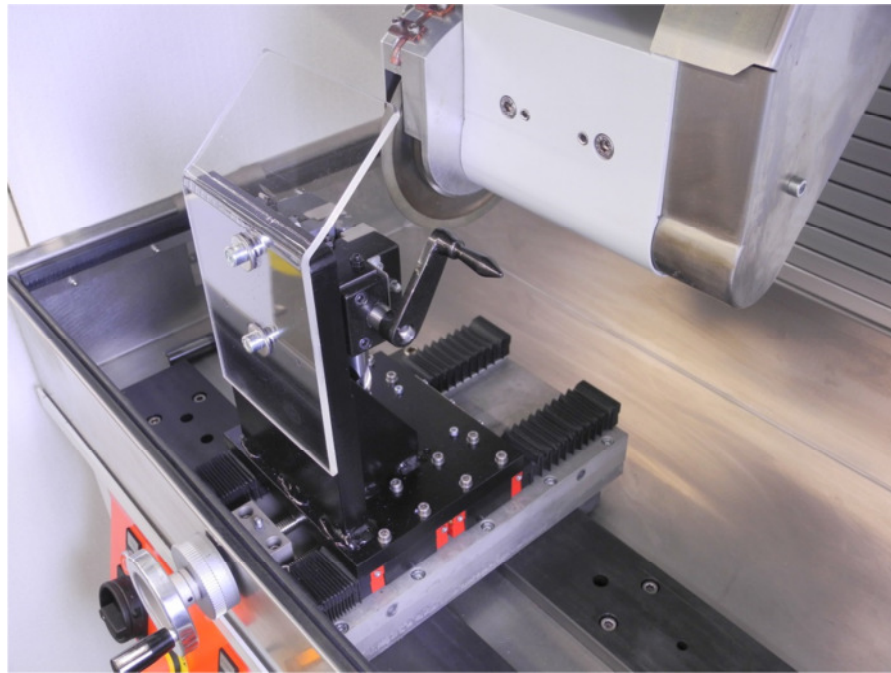
374.17.112.15 und 374.17.112.16 special clamping jaws



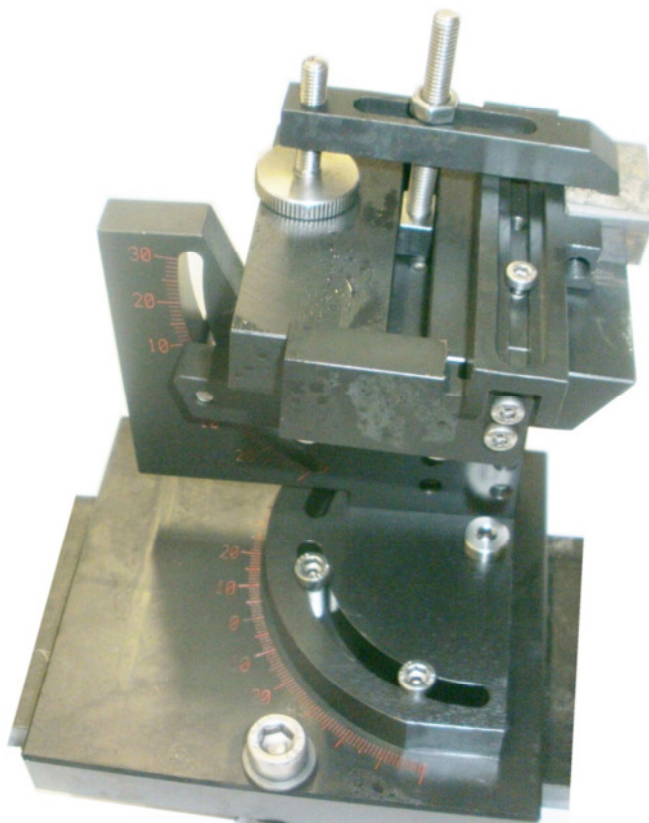
Measuring device with digital display 372.35.625.00 , here for a measuring length of 2 meters



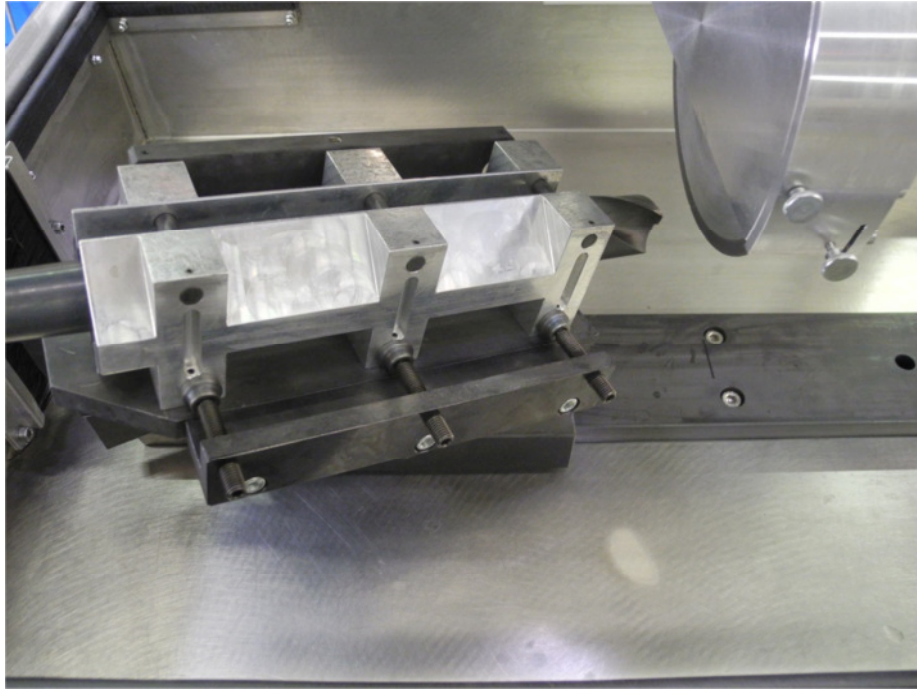
Measuring stop 370.17.520.00 for clamping device with V prism



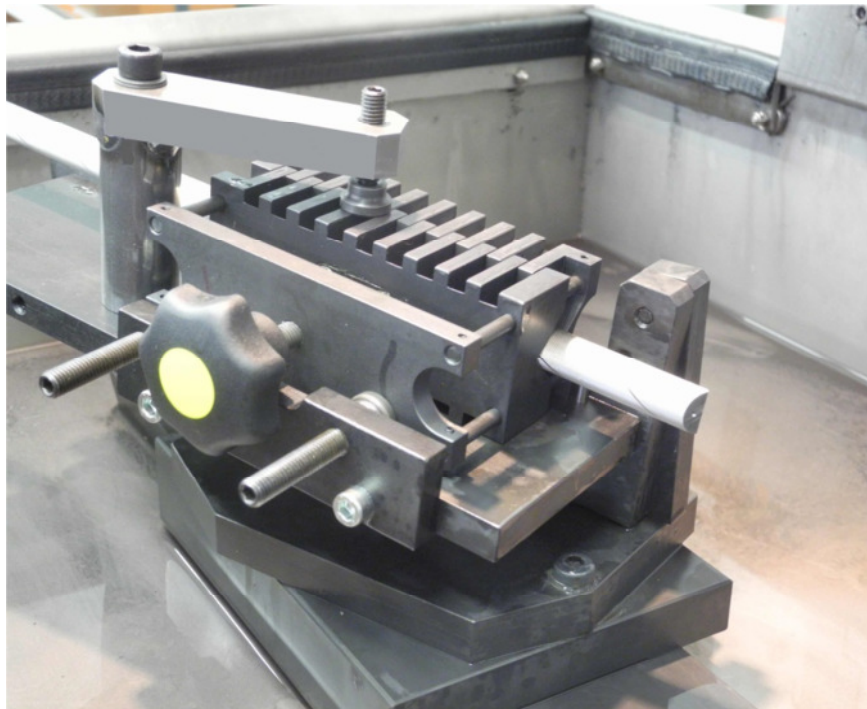
374.17.140.00 Special measuring device for longitudinal slits



374.17.150.00 clamping device for carbide tips swivelling in 2 planes



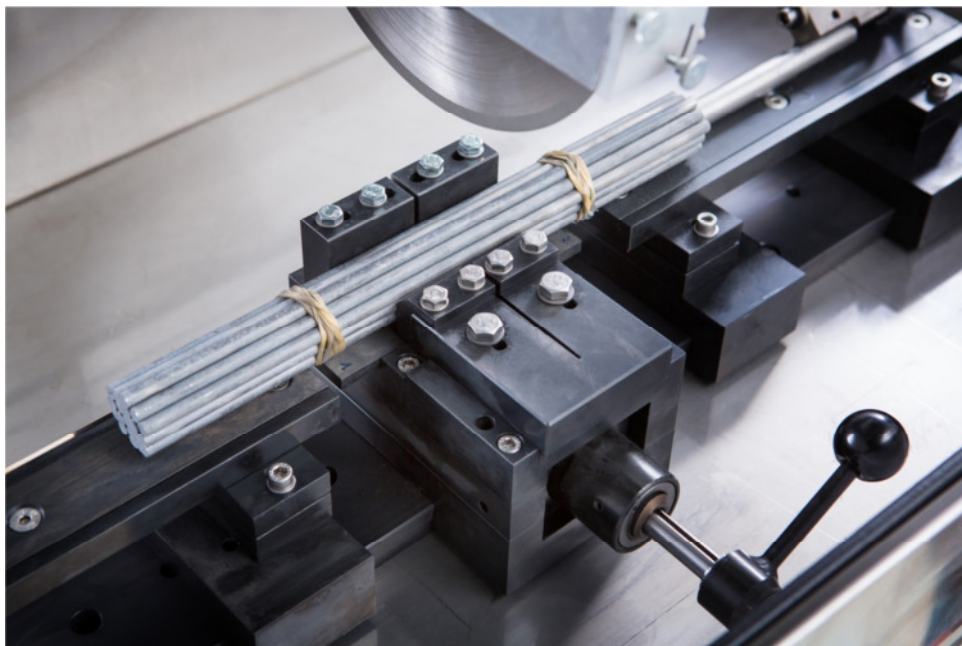
Drill clamping device 374.17.156.00 to cut-off twist drills up to  $\varnothing$  40 mm with point angles of  $110^\circ$  to  $150^\circ$



Drill clamping device 374.17.158.00 to cut-off small twist drills up to  $\varnothing$  25 mm with point angles of  $110^\circ$  to  $150^\circ$

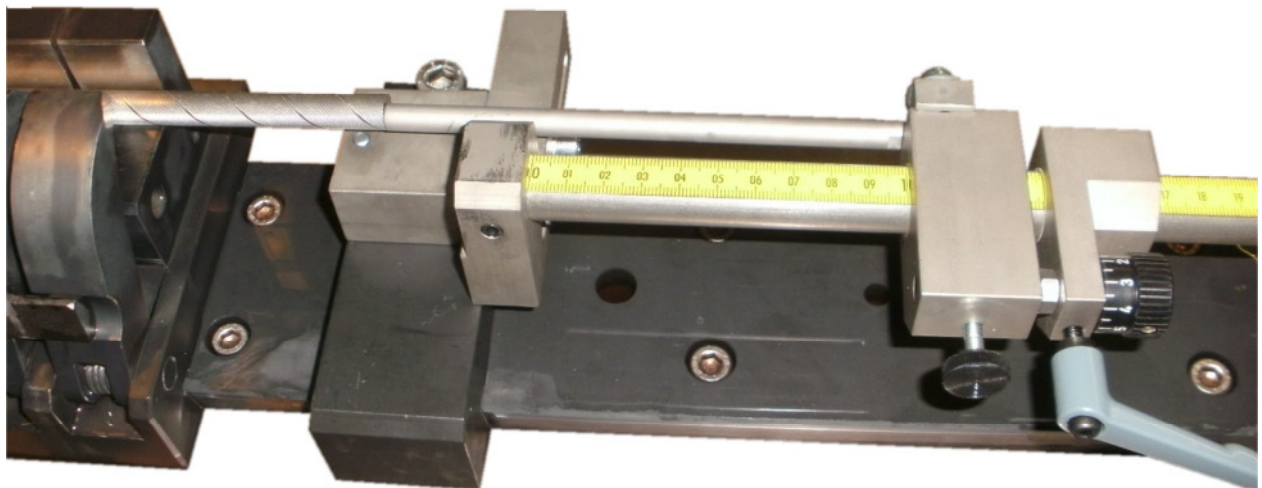


374.17.160.00 quick clamping device with pushing lever and built-in measuring device with digital display 372.35.616.00





374.17.200.00 Pneumatic 3-point clamping device without carbide with built-in measuring stop with digital display 374.17.530.00

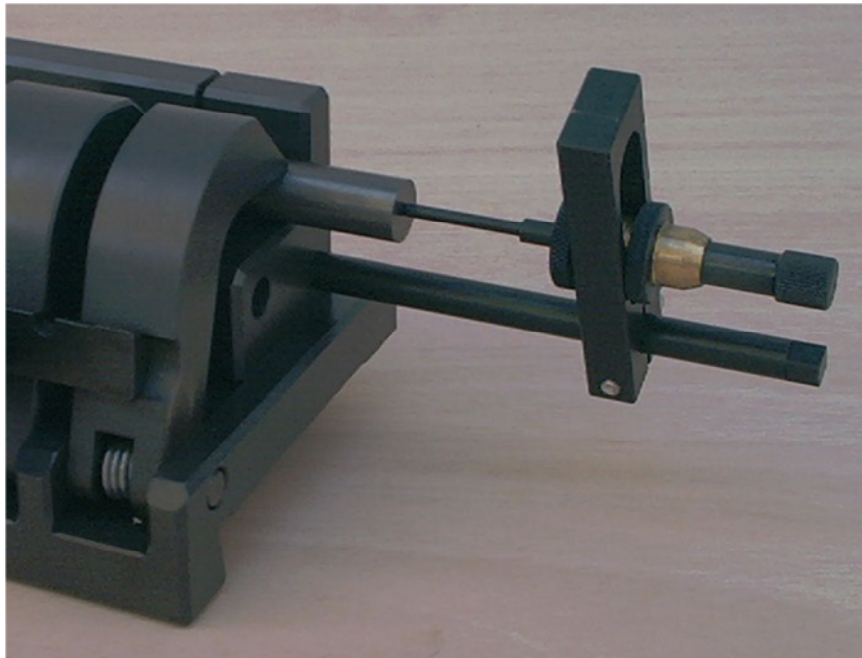


Stop with ruler 374.17.220.00 (270 mm) and 374.17.505.00 (400 mm) to cut-off a series of work pieces to the same length, also useable with the pneumatic clamping device

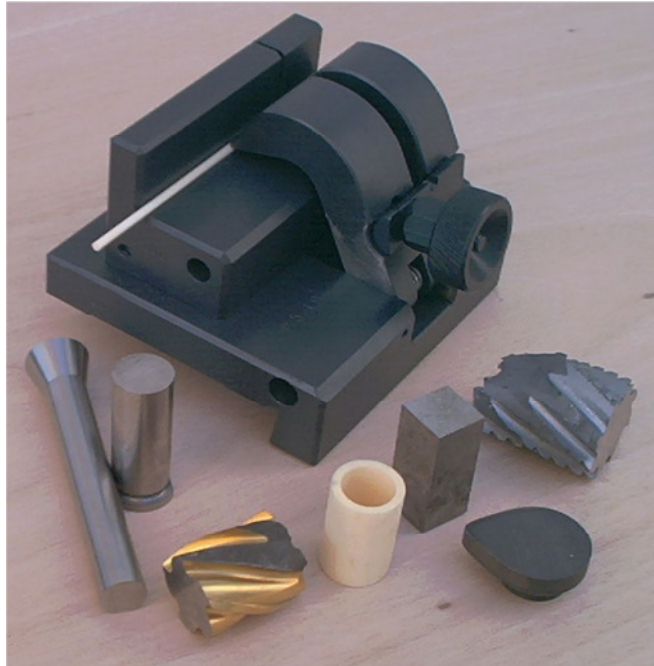




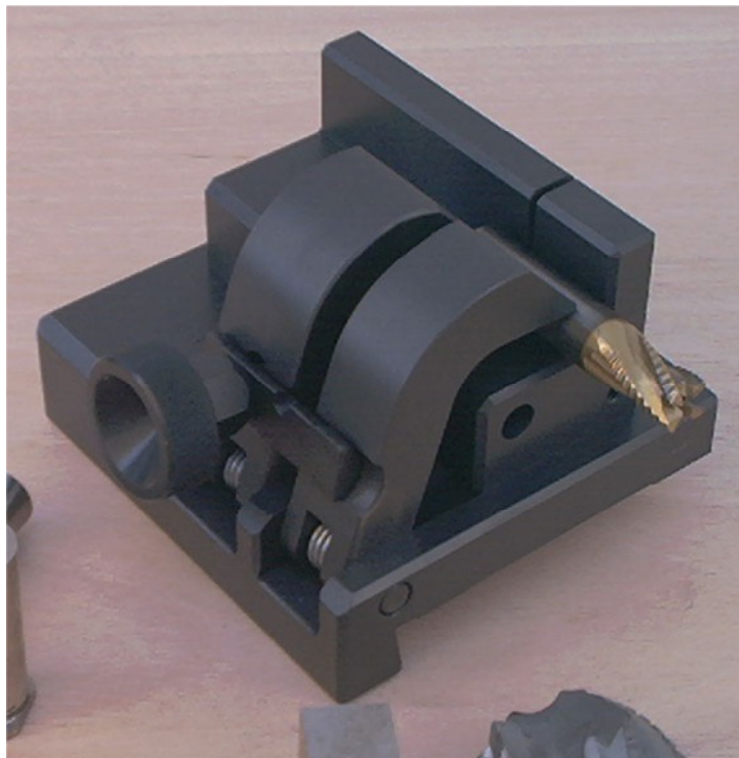
Special device 374.17.540.00 to cut-off linear guides



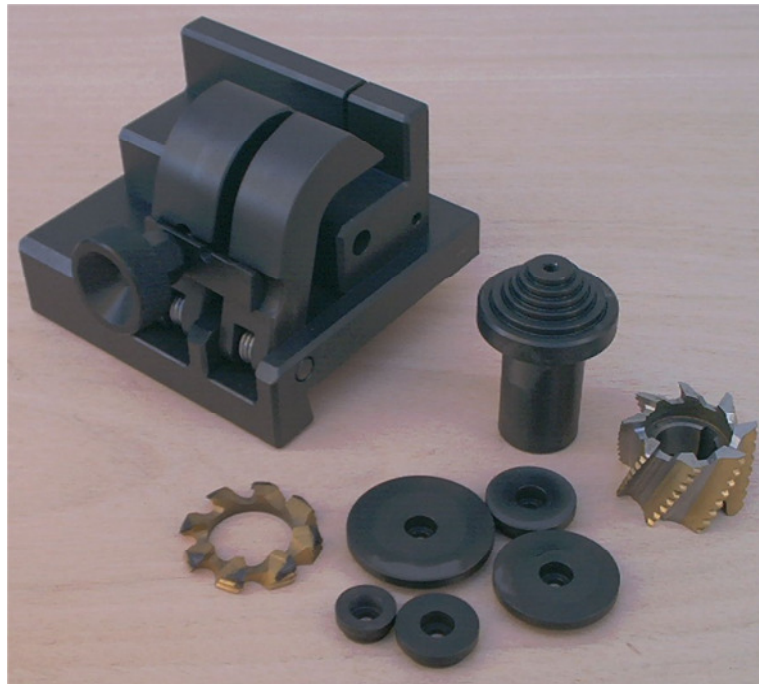
Clamping device 370.17.100.00 with stop 370.17.110.00 to cut-off a series of parts to the same length



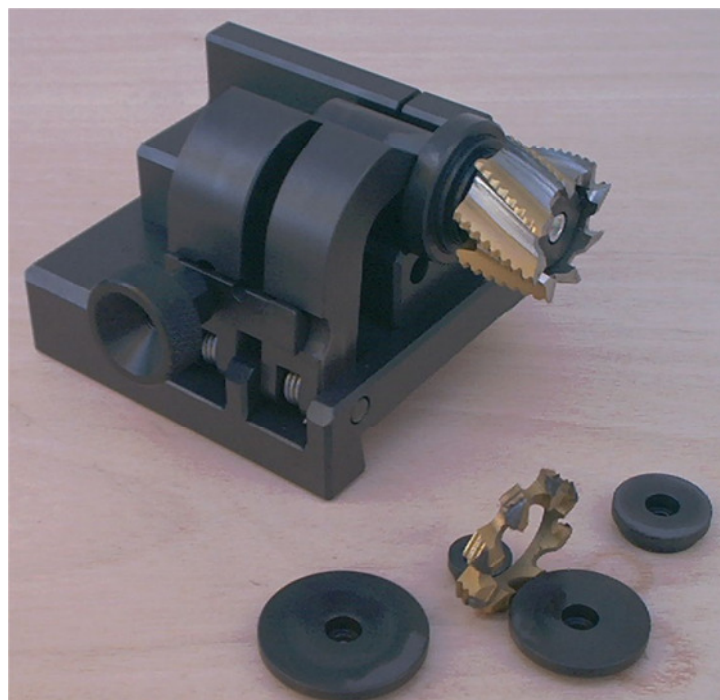
With this one can cut-off safely end mills, punches, material probes and rectangular parts



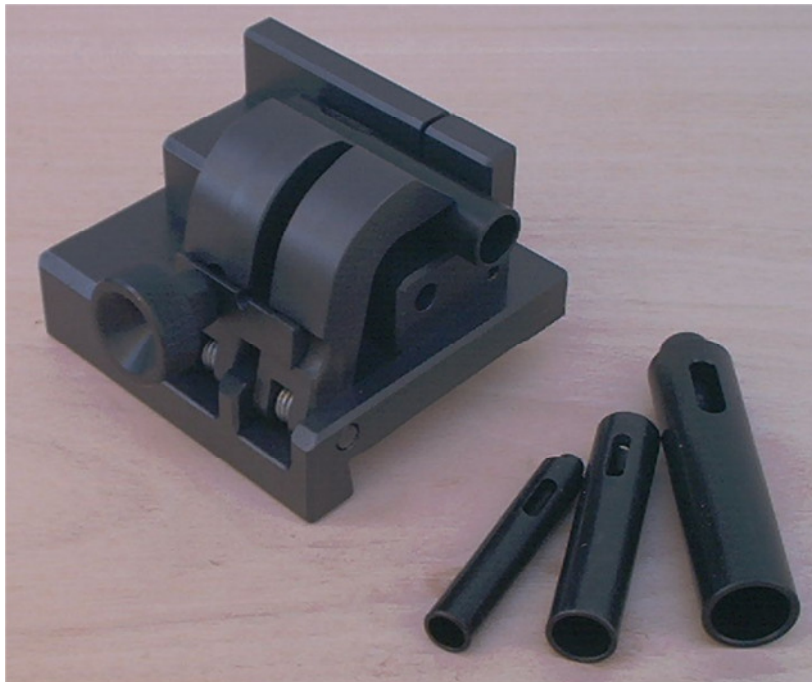
To part-off the face of cylindrical cutters, they are clamped like shown



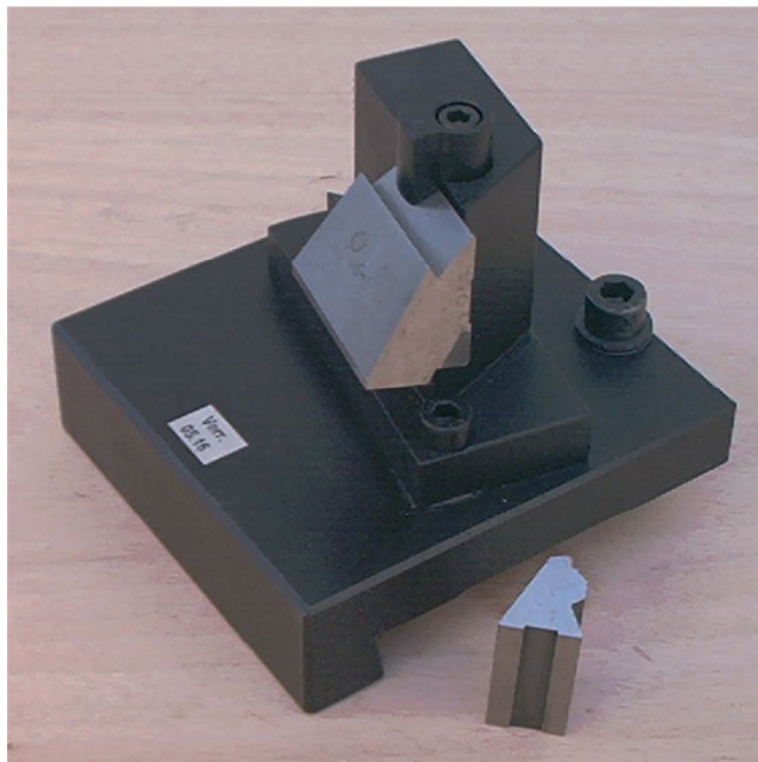
Arbor for side and face mills, 370.17.250.00 - all standard bores on the same arbor



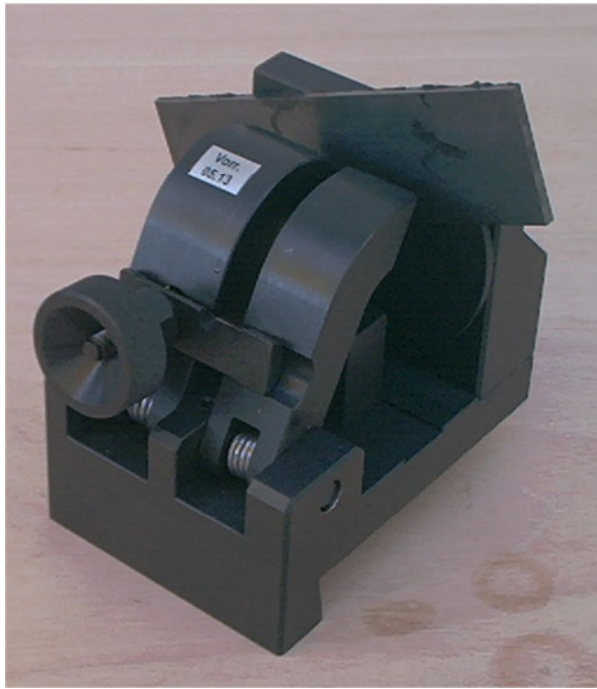
The arbor 370.17.100.00 will be clamped as shown – like this, you can part-off side and face mills until  $\varnothing$  125 mm in multiple steps



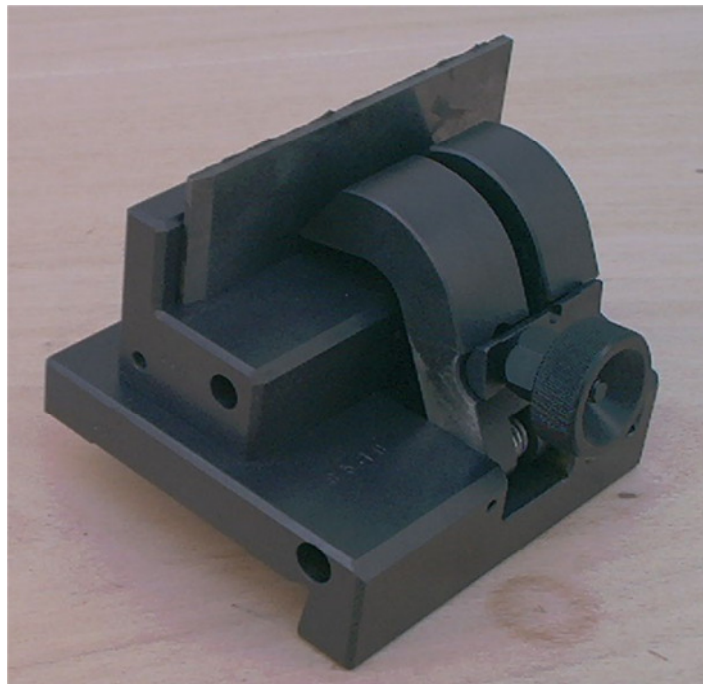
To clamp cutters with taper shank, we deliver special taper sleeves  
370.17.210.00 for MT 1, 370.17.220.00 for MT 2 and 370.17.230.00 for MT 3



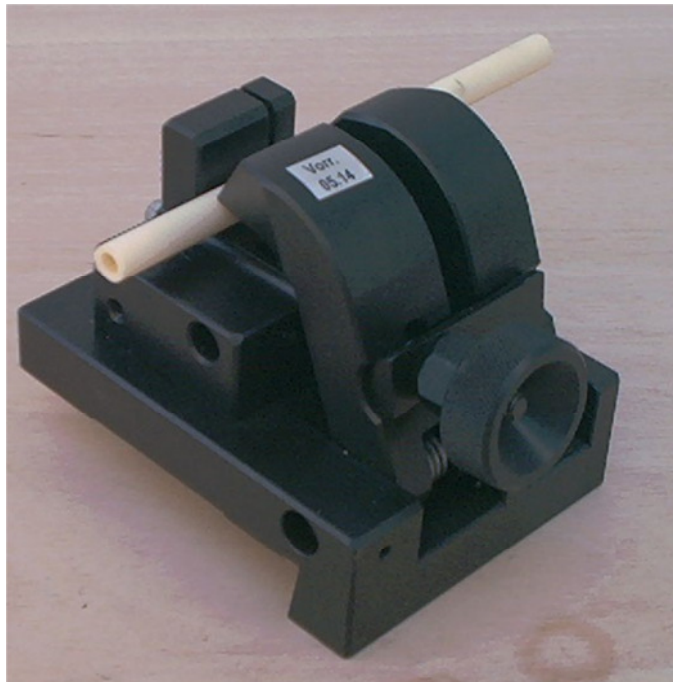
Clamping device 370.17.160.00 to cut-off and face tangential turning tools



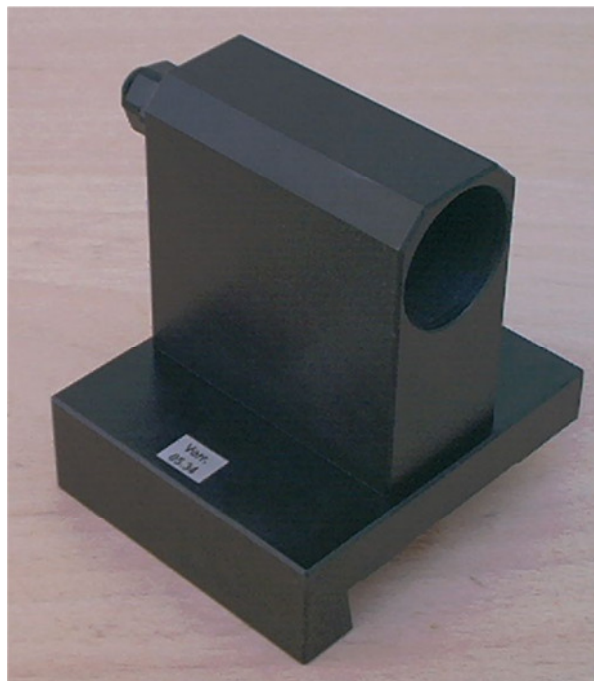
Clamping device 370.17.130.00 for biased cuts 45° on both sides – only for flat material 4 mm or bigger



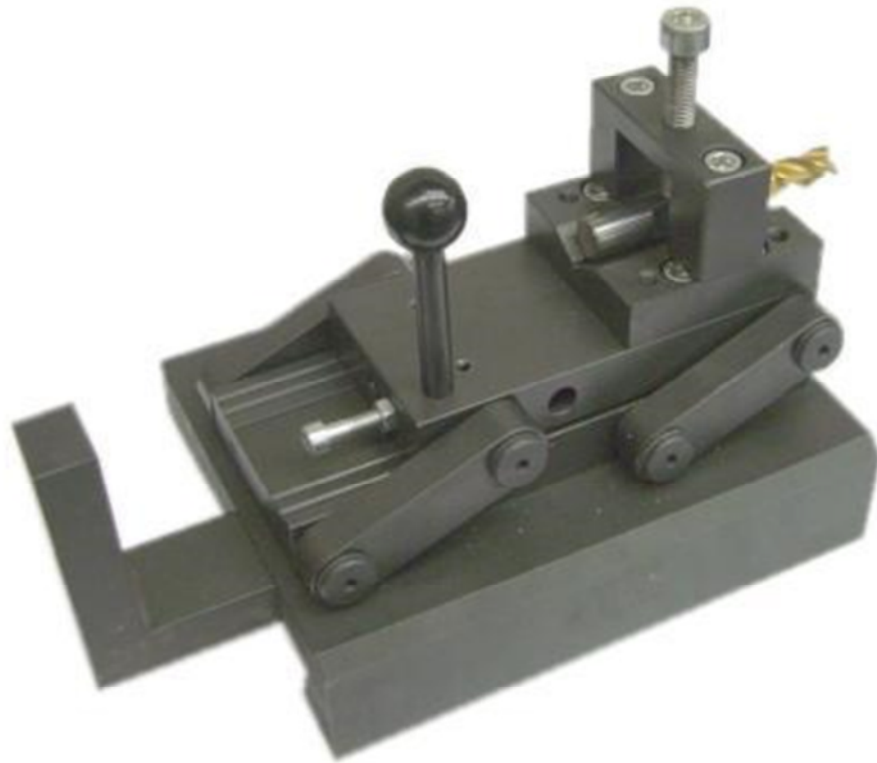
90° cuts on flat materials can also be ground with the clamping device 370.17.100.00



Clamping device 370.17.140.00 to clamp small parts of  $\varnothing$  1 – 30 mm.  
This device is like 370.17.100.00, only with a smaller prism



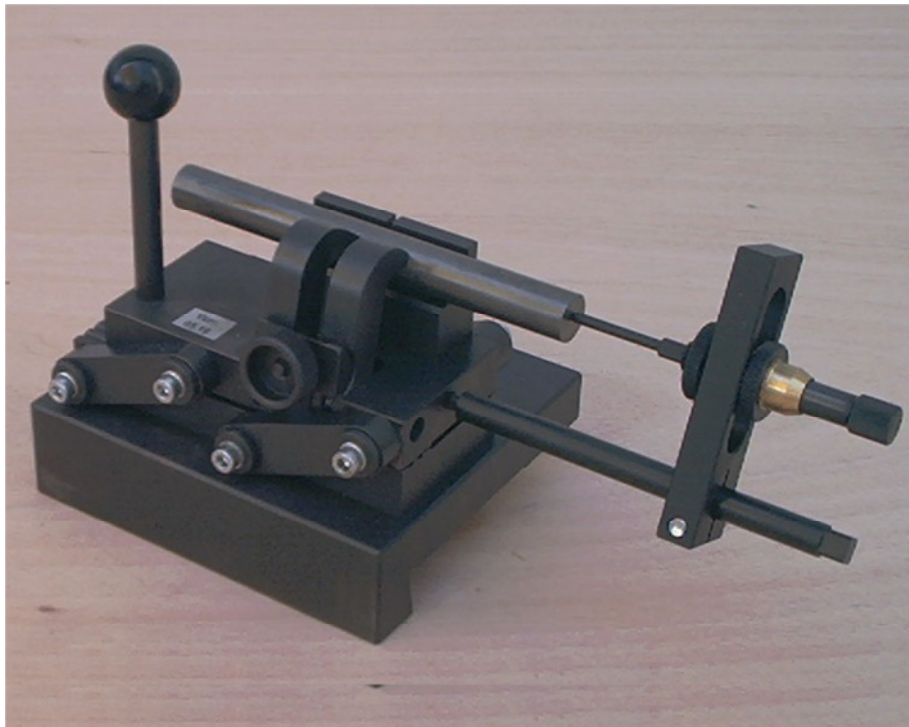
Holder for cutters with MT shank and other conical ISO shanks  
370.17.240.00 for MT 4                      370.17.260.00 for ISO 40  
370.17.245.00 for MT 5                      370.17.265.00 for ISO 50



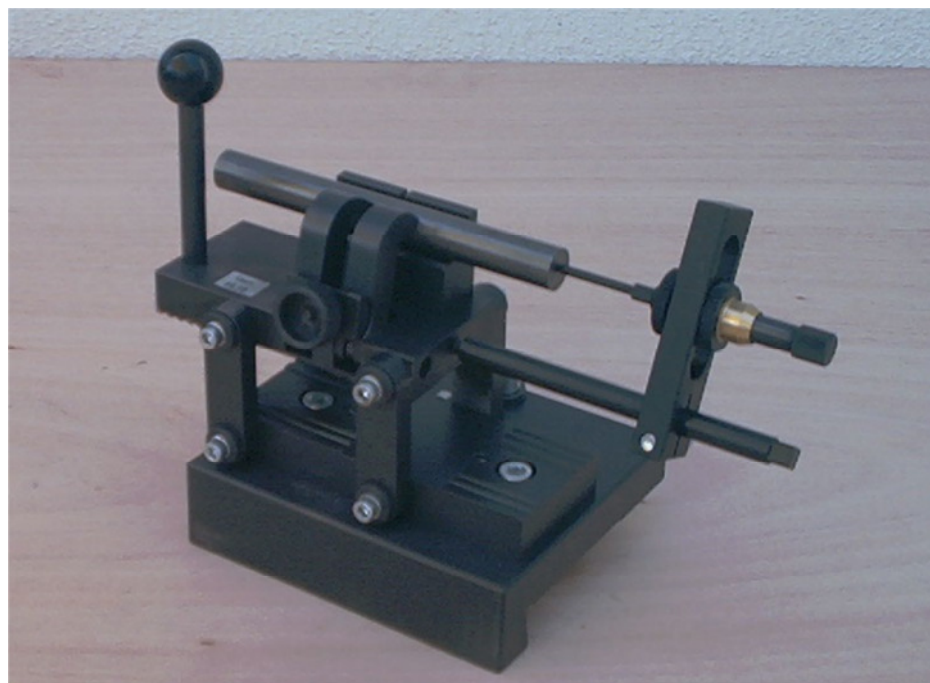
Clamping device 370.17.170.00 with prismatic clamping to part-off faces of cutters with cylindrical shank until  $\varnothing$  25 mm



The special feature of this clamping device is that you can lift the device out of the water with a parallelogram without emptying the water

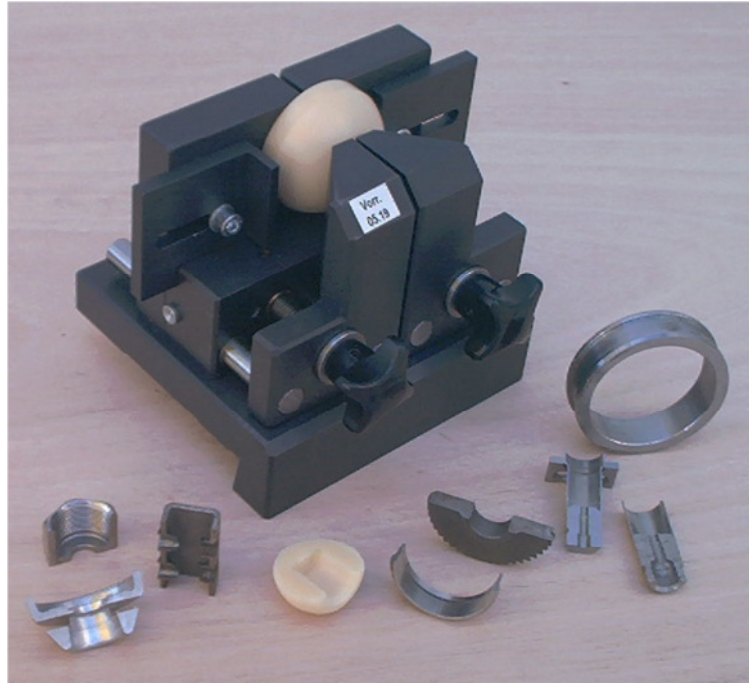


3-point clamping device 370.17.180.00 to clamp cylindrical work pieces until  $\varnothing$  25 mm (similar to 370.17.100.00)  
-with stop 370.17.110.00

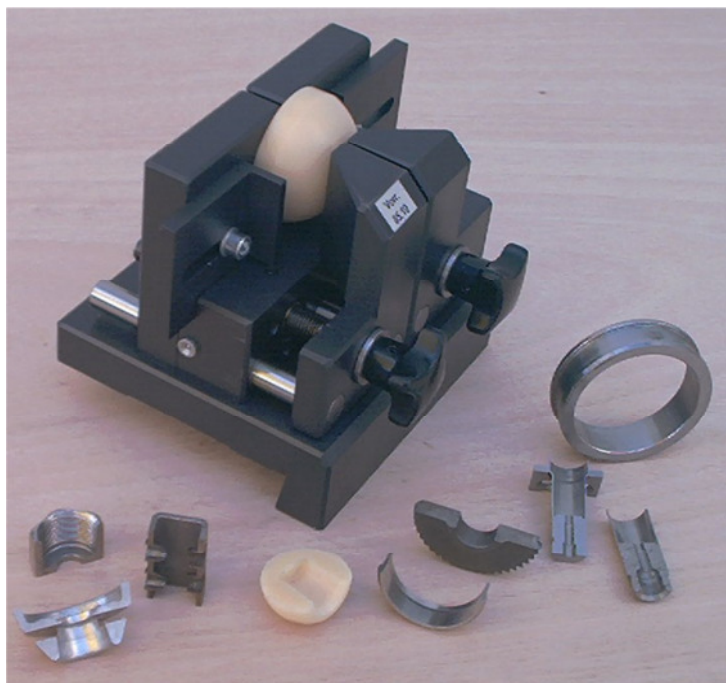


The special feature of this clamping device is that you can lift it out of the water with a parallelogramme without emptying the water





Clamping device 370.17.190.00 with two separately mobile jaws to clamp of turned work pieces in the axial direction

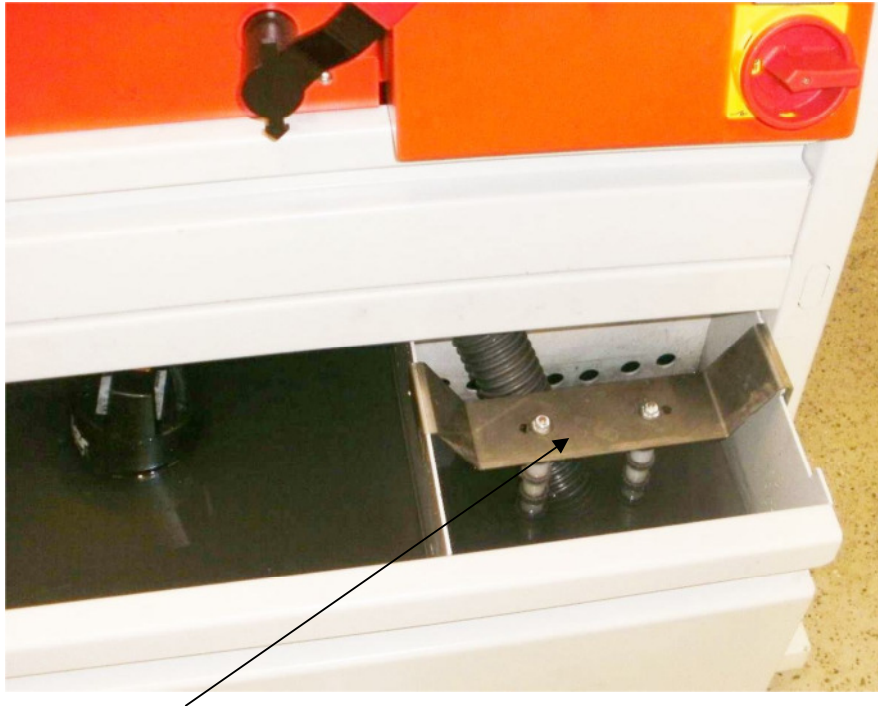


With this device, one can cut-off work pieces for the metallurgical exam and check the internal profile



Clamping device 374.17.195.00 to cut-off planing knives and blankets

## Accessories – magnetic candle



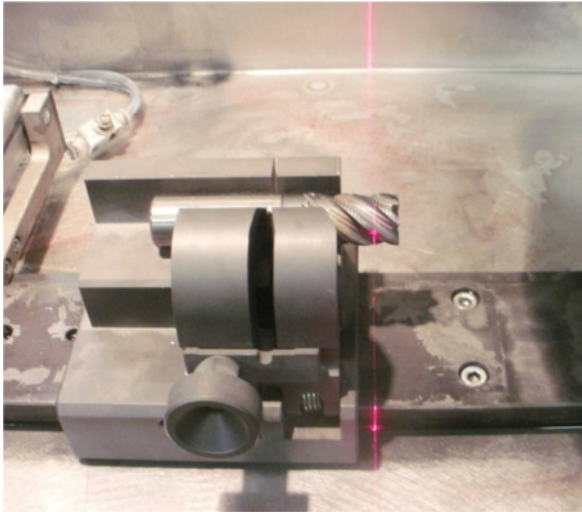
Fix the magnetic candle 370.15.140.00 on the right side front compartment

The magnetic candle will attract the grinding particles of magnetic materials in the coolant and like this, it prevents them from remaining in the coolant

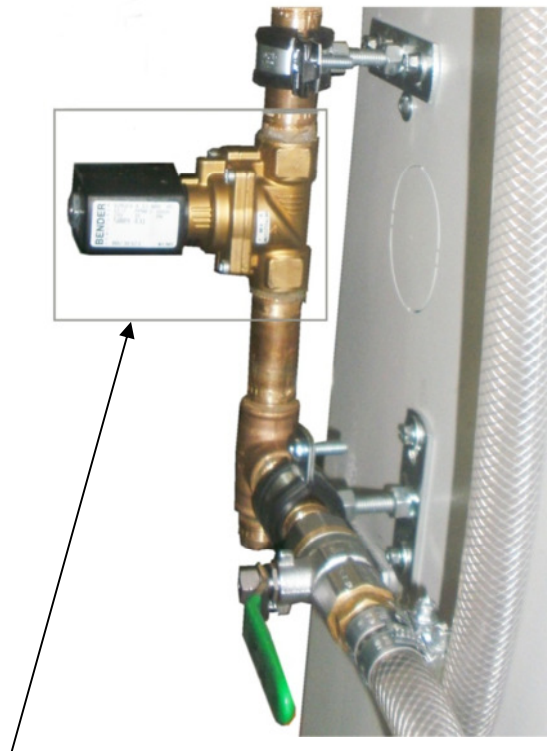
Further accessories like water vats with special lengths, pneumatic clamping devices or digital measuring length devices on request



Cleaning set 374.15.180.00 to clean the work pieces and other parts in the water vat



Line laser 374.90.041.00 to easily set-up various clamping devices



Coolant connection 374.90.235.00 for connection to a central coolant supply



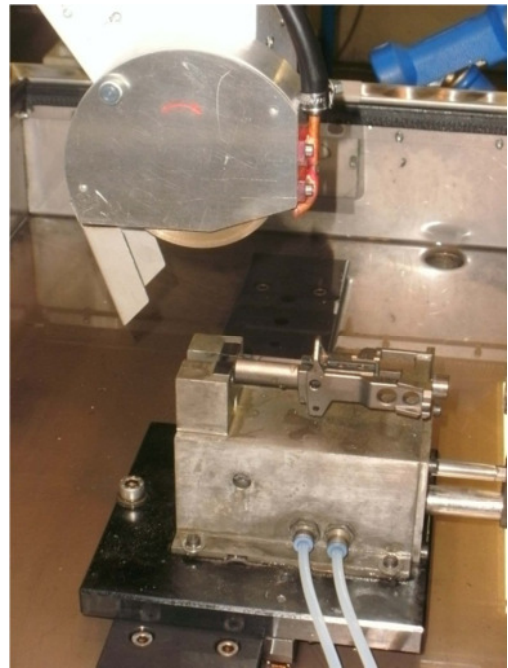
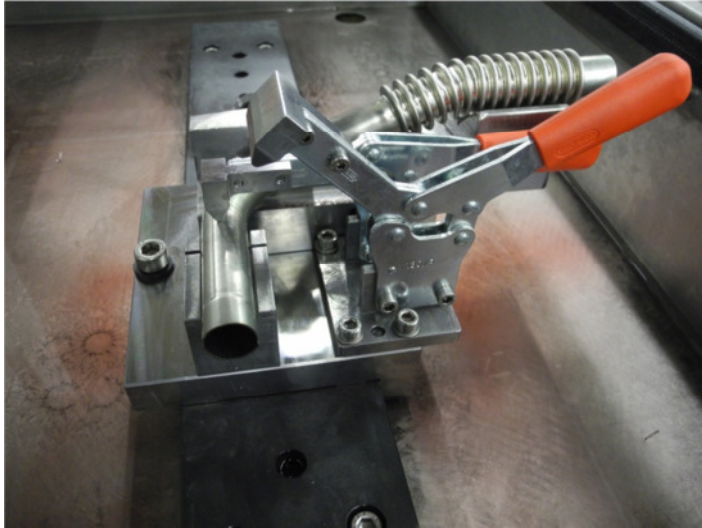
CO2 extinguisher 374.90.200.00 to work with machine oil



Roll fixture 372.35.110.00 for long materials from 1 – 6 meters, to be fixed onto the machine



Roll fixture with digital length measuring device for materials from 1 – 5 meters 372.35.610.00, to be fixed onto the machine



Special clamping device for customer's special requirements and other applications available on request